

Good Shepherd Episcopal Church

Hayesville, North Carolina

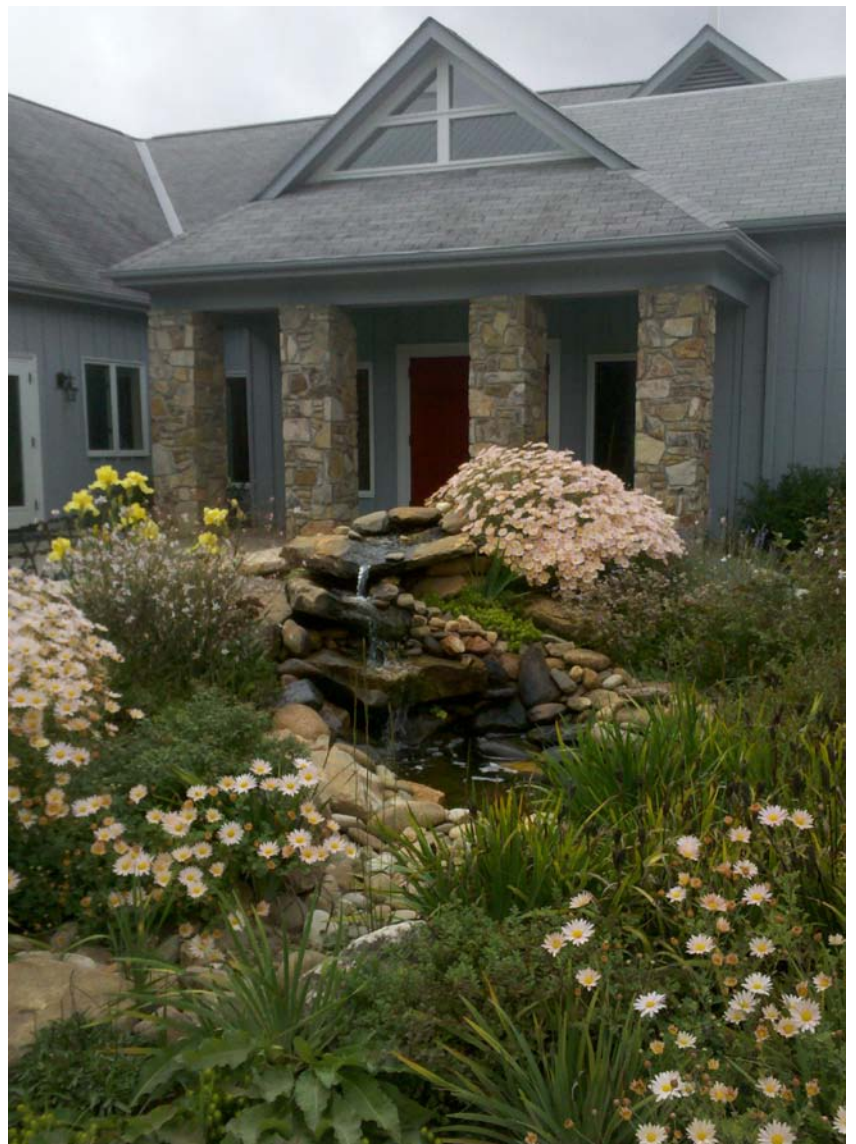
Diocese of Western North Carolina

Parish Profile

*Empowered by
the Holy Spirit,
the people of
Good Shepherd
are called to
joyfully reveal
God's love and
Christ's healing
light to all.*

Good Shepherd Mission Statement

adopted 2005





Welcome

One has to cross a mountain or two before getting to Good Shepherd. Those of us who live here re-experience that sense of coming home every time we descend into the beautiful Hiawassee River valley, which cradles TVA's Lake Chatuge. The towns of Hayesville, North Carolina, and Hiawassee, Georgia, nestle on either side of the lake.

CONTENTS

[Welcome](#)..... 2

[Who We Are](#) 2

[Our Demographics](#)..... 3

[Our Worship](#) 3

[Our Dream for the Future](#)..... 4

[Expectations of the Rector](#) 5

[Humble Beginnings](#)..... 6

[Parish Ministries](#)..... 8

[How We Work](#) 12

[Our Finances, Statistics](#)..... 13

[Rector Compensation](#)..... 13

[Our Facilities](#)..... 14

[Our Diocese](#) 15

[Our Communities](#) 16

[Vestry and Discernment Committee](#)..... 20

[How to Apply](#)..... 20

Who We Are

The Good Shepherd congregation is an energetic, generous, fun-loving, hard-working, caring community of faith which welcomes all. While our demographics may have changed somewhat over the years, Good Shepherd continues to have a personality all its own. The following description written in 2005 remains accurate today, as confirmed in the parish self-study survey conducted in the search for a new rector:

From Epilogue to *A Fiftieth Anniversary Story*
By Eleanor L. Wilson, a founding member:

The Holy Spirit has guided four bishops and eleven priests who have affected the lives of this congregation through the years. The church family comes from different parts of the country, various spiritual backgrounds and denominations, assorted backgrounds and experiences. We have grown close to each other in our Community of Faith. Since 1952, when we first started meeting together, we have been blessed with a steady growth in means, membership, and a sense of mission. Worship, fellowship, study, hospitality and outreach have been goals of this family in Christ ... We are a congregation with a sense of humor and fun, a working congregation as well as a worshipping one, a forgiving congregation.

We welcome differences and learn from them. We're a faithful family, willing to take chances and accept change. We believe that the miracles recounted in Sunday School episodes are small in comparison with the miracles that come in our lives as we listen for God's will and follow Him.





Our Demographics

Good Shepherd is a blend between a pastoral church and a program church. While retaining the close community and mutual support of a pastoral church, our attendance and many lay-led ministries show us growing into a program category. We hope never to lose that strong sense of family, even as we grow.

Active baptized members total 258, including 12 youth under the age of 16. The 2011 combined average Sunday attendance of two services was 167. We can comfortably seat as many as 180 in the nave.

Slightly more than 50% of our members are over age 65. Of the 50% who responded to our recent self-study survey, 73% are retired. The survey reports that 72% rarely miss weekly service, and 82% submit a scheduled pledge. We may be older and retired, but we are committed to the Lord's work!

In addition, we are a diverse group: 52% of respondents spent their formative years in the South and 48% in the North; 64% came from 17 different prior denominations; and 92% say they have been received or confirmed into the Episcopal Church.

Although the majority of the parish lives within 10 miles of the church, about 2/3 of the congregation lives in North Carolina and 1/3 lives in Georgia.

Our Worship

Sunday worship includes Rite I Eucharist at 8 a.m. Two Chalcists assist the Priest and there is no music. Rite II Eucharist is at 10:45 a.m. with organ, piano, and Chancel Choir. The Deacon, two Chalcists, and an Acolyte assist the Priest. A message for children and youth is part of this service. Occasionally we have a Rite II service with contemporary music by the Joyful Noise singers and their guitars and percussion instruments.

We offer Adult Spiritual Formation and Bible Study at 9:15 for adults. Children's Church is held from 10:45 until the Passing of the Peace when they join the congregation for communion.

We offer a noon Healing Eucharist on Thursdays and many find mutual support through this informal service. A quiet healing service called Soaking Prayer is also offered by the Order of St. Luke on Tuesday evenings. Both healing services attract people from the community as well as parishioners in need of prayer.





Good Shepherd's Collect for Discernment

Blessed Lord, who gave us Your Son and our salvation and who led the founding members of Good Shepherd to foster the growth of this church with their time and talents, guide the minds and rule the wills of the Good Shepherd family and of our future rector that we may be wholly yours and dedicated to following your Holy Spirit. These blessings we ask in the Holy Name of Jesus. Amen



Our Dream for the Future

Good Shepherd's mission statement sums up our motivation for everything we do: **Empowered by the Holy Spirit, we are called to joyfully reveal God's love and Christ's healing light to all.**

Joy, fellowship, love, community and caring are very evident at Good Shepherd – all demonstrable fruits of the Holy Spirit. As confirmation of Who is drawing people to Good Shepherd, "Sense of the Holy Spirit" was the number one reason checked by survey respondents for why they continue to attend.

Good Shepherd parishioners are gifted, generous, gregarious, educated, hard-working, and committed to each other and to following God's will. Our church is known in the community for its outreach via hands-on labor, leadership roles in local charities, and monetary support in over 20 organizations across four counties.

However, the ministries scoring highest in personal importance to parishioners were social events and pastoral care services – possibly reflecting the interests of a retired population. Pastoral care also ranked high on the list of desirable qualities in our future rector.

The number one dream of the parish, as expressed in both the Holy Conversation and the parish survey, is to grow Good Shepherd's membership, specifically through an increase in the number of youth and young families. We hope this expansion will further the extension of outreach.

So, we find ourselves with a challenge facing many churches today:

- ▶ We need to be responsive to the needs of an aging population and also to seek to be relevant and attractive to a younger generation which may be coming from an entirely different spiritual reality.
- ▶ We feel that God is calling to us a rector who is able to work with all ages and who can help the parish refine this evolving vision of Good Shepherd as an inclusive and multi-generational community of faith.

Summary of Results from Parish Self-Study Survey*

TOP TEN PARISH GOALS

1. Provide more worship, spiritual, recreational, and social activities that are attractive to young people and families with young children.
2. Continue and strengthen our healing ministry program.
3. Encourage increased member involvement in our various ministries.
4. Encourage/invite inactive members to return to the congregation.
5. Enhance and expand our individual spiritual growth by providing more bible study, prayer and study groups.
6. Enhance and expand our in-reach ministries by providing more family retreats, fellowship groups, and social events.
7. Expand our welcoming/newcomer ministry.
8. Establish neighborhood groups to facilitate emergency care, new member integration, and other parish activities.
9. Expand the music program to include a variety of music styles and instruments.
10. Interact more with other churches in our neighborhood and our Diocese.

Key Points

- † Grow the church
- † Attract young families
- † Strengthen healing
- † Increase participation
- † Deepen spiritual life
- † Nurture all members – new, old, and lapsed

** 151 surveys were returned from 300 distributed. 38% of the respondents have attended more than 10 years, 30% 6-10 years, and 30% 5 years or less.*

Key Points

- † Sermons: dynamic, scripturally based, and currently relevant
- † Personality: warm, humorous, young-at-heart, works with all ages
- † Spirituality: mature, grounded, empowered by the Holy Spirit
- † Pastoral nature: inclusive, caring, inspiring, and an active, reflective listener

TOP TEN EXPECTATIONS OF THE RECTOR

1. Preaches sermons based on a variety of sources (e.g. scripture, personal experiences) that we can apply to our daily lives in today's world.
2. Recognizes the importance of laughter and humor.
3. Is a skilled communicator who listens actively and reflectively.
4. Actively seeks and incorporates new members and youth into the church.
5. Preaches sermons that help us understand scripture.
6. Personally ministers to the sick, dying, bereaved, and youth.
7. Strives to include all people – youth, newcomers and elderly – in the life and activities of the parish.
8. Values music as important to worship.
9. Lives a rich spiritual personal life, with time for devotions.
10. Provides spiritual direction (i.e., helps us examine our spiritual development, religious life and beliefs).

Humble Beginnings

A favorite memory of mine is our Sunday School classes taught by Rufus Vick in his white Plymouth sedan out in our gravel parking lot...as we sat packed into the back seat. (Becky Van Gorder, circa 1959)



To understand the strength of Good Shepherd's lay leadership, one only has to look at our beginnings. The seed for Good Shepherd was planted by four Clay County couples who began meeting as a study group in 1952. In 1955 Good Shepherd was officially recognized by the diocese as a mission congregation and functioned as a yoked congregation with the Episcopal Church of the Messiah, Murphy, North Carolina, until 1986.

The congregation built its first home in 1958-59 as a simple concrete block building of 960 square feet. In the 1970s, when the church was ready for a much-needed expansion, it had unknowingly become land-locked.

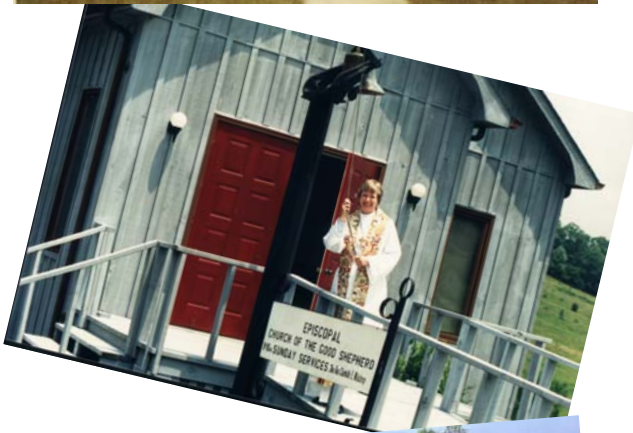
The Rev. Brad Rockwood encouraged the parish to purchase the present property on US Highway 64. The church's new home, built with much oversight and labor by church members, was consecrated by Bishop Weinbauer in 1981.

In the ten years Fr. Rockwood served Messiah and Good Shepherd, he encouraged many joint activities and sharing of resources between the two churches. When he retired in 1986, the biggest shift in Good Shepherd's history took place. The church severed the yoked relationship with Messiah and called The Rev. Charlotte Waldroup in 1987. The enthusiastic, hands-on participation of a full-time rector required an adjustment for a largely lay-led church.

Many still-active programs such as Grazers, Clay County Food Pantry, and Stephen Ministry were started during the nine years Mother Charlotte was priest. During her tenure, adjoining property was bought and the facility greatly expanded to provide office space, accessible bathrooms, a parish hall, and an enlarged nave. All 103 families participated in pledging financial and physical support. Completion of the new addition was celebrated in September 1992.

In 1995, The Rev. Bob Reuss served two years as interim priest before The Rev. Deacon Donald O'Malley accepted the call to Good Shepherd in June 1997. He was ordained as priest in December. Fr. Don was a Biblical student, good teacher, and good administrator.

During Fr. Don's six years, the River of Healing chapter of the Order of St. Luke was established, Daughters of the King became active, and many grew in their spiritual





formation through Bible study, Cursillo, and other programs.

In 1997, Turner Guidry, a parishioner and a counselor in the school system, was ordained into the vocational diaconate. His special emphasis on youth and young men has been a great addition to Good Shepherd.

A second major shift in our history occurred in 2003 when Fr. O'Malley and nearly a third of Good Shepherd's most active parishioners abruptly left the Episcopal Church over differences with decisions made at General Convention.

At the suggestion of then Bishop Robert Johnson, The Rev. John Rice, who had led workshops in the healing ministry at Good Shepherd, arrived in November 2003 as priest-in-charge. Before long, both Fr. John and the vestry felt a strong sense that he was being called to be our rector, and the Bishop gave his approval. Fr. John's warm and engaging personality soon attracted many new members, restoring attendance to its previous level.

Over Fr. John's eight years, the prayer shawl ministry was begun and Stephen Ministry revived; mission trips were made to Mississippi, Mexico, India, and Jamaica; and we celebrated our 50th anniversary in 2005.

For years, vestries had engaged in long-range planning in preparation for the anticipated swell of retirees moving to the mountains. Our region was already one of the fastest-growing in the country. Progress had been made in optimizing our limited acreage and doubling parking capacity, and a Master Plan was developed.

While Fr. John was on sabbatical in 2010, construction of Phase 1 of the Master Plan began on a welcoming new parish hall, kitchen and nursery, plus an addition to provide modern restrooms, meeting rooms, and space for a future elevator. When the time is right, God willing, this addition will form a bridge to Phase 2 of our master plan: a new and larger nave.

Fr. John's sabbatical focused on a study of healing gardens. On his return, a landscape plan for several gardens on the property was designed and is partially completed.

Good Shepherd celebrated the opening of the new Parish Hall with a month-long Celebration of Arts and Spirituality. The art show, concert, and Adult Spiritual Formation programming were singled out as the most meaningful recent event by parishioners at the Holy Conversation.

The Rev. John Rice retired from parish ministry in February 2012. Good Shepherd is now blessed with the experienced leadership and teaching skills of The Rev. Linda Baker Pineo as interim rector.



Parish Ministries

Each year for the past five years the Pastoral Care Coordinator has compiled the 50 ministries of the church into a booklet. For each ministry there is a description, the name and phone number of the head(s) of the ministry, and the spiritual gifts that are activated in each ministry. Every family in the church and every newcomer is given a copy of this booklet which describes, more than anything else we could have said, what we believe and what we are about.

WORSHIP MINISTRIES:

Acolytes, Altar Guild, Chalicists, Chancel Choir, Flower Guild, Joyful Noise, Lay Eucharistic Visitors, Lectors/Prayers, Ushers/Oblation Bearers, Wedding Coordination

The most meaningful participation reported by most parishioners is through the sense of the Holy Spirit at work in worship and in community. Many find their deepest joy in singing or listening to the choir, serving as part of the worship service, or through Altar Guild and Flower Guild, or taking Eucharist to shut-ins as a Lay Eucharistic Visitor.

CHRISTIAN EDUCATION and YOUTH MINISTRIES:

Adult Spiritual Formation, Cursillo/Ultreya, Daughters of the King, Library, Children's Church, Nursery, Youth, Order of St. George

Bible study, Education for Ministry, Cursillo, and small book studies provided a strong foundation in Good Shepherd's first 50 years, but adult studies have been less consistently attended in recent years. Some programs have suffered from lack of strong leadership and the general busy-ness of the congregation. One popular program is the Lenten soup-and-salad study led by the priest. Small groups – including several long-standing Cursillo reunion groups – continue to feed those hungry for spiritual growth. More than 70 parishioners have attended a Cursillo or equivalent renewal weekend.

We have an active children's program. Nursery is offered, and Children's Church – preceded by a message for children and youth in the nave – continues with faithful volunteers.





The Order of St. George – an ecumenical, student-led group of teenage boys – meets for breakfast and devotions at the church with Deacon Turner before school on Thursdays.

“LifeSavers” is another ecumenical program designed for middle and high school youth. Good Shepherd and neighboring Oak Forest Methodist Church combine their youth groups and share leadership and facilities.

PARISH LIFE MINISTRIES:

Coffee Hour, Grazers, Men's Association, Office Volunteers, Parish Life, Telephone Committee

As was observed at the Holy Conversation, one of the things we do well is to celebrate and rejoice in one another! With good cooks and caterers in the congregation, social events are a feast for the eyes as well as the tummy.

Coffee Hour following the second service is supported by the ministries and is an informal way to introduce visitors to members of the parish.

One of our most successful Parish Life ministries in the past 7 years has been the Grazers (Foyers) program in which 48% of respondents report participating. Grazers is an excellent follow-up for newcomers to bring them into the "family" quickly.

The Men's Association is a great help to widows and others in the congregation needing help, in addition to sharing a good social time during their monthly breakfast.

CHURCH GROWTH and EVANGELISM MINISTRIES:

Communication, Welcoming, Greeters and Newcomers

With dynamic and committed leadership, one ministry that has made a significant impact on the parish is the Welcoming, Greeters and Newcomers program. The greeters have helped to create a culture in which "welcoming," "friendly," and "inclusive" are some of the most often repeated descriptions of Good Shepherd in both the survey and the Holy Conversation. However, it was acknowledged in our self-study that there is always room for improvement, especially with follow-up.

We are making a concerted effort to improve our internal and external communications through the website, emailed newsletters, newspaper articles, and signage.





We joyfully encourage, equip, and empower God's people to expect, experience, and extend Jesus' healing today. (River of Healing OSL chapter mission statement, 2012)



PASTORAL CARE and HEALING MINISTRIES:

Bereavement Hospitality, Order of St Luke, Pastoral Care Team, Prayer Chain, Prayer Shawl Ministry, Stephen Ministry

Along with "sensing the presence of the Holy Spirit" and "the sense of feeling welcomed and included as part of a family," parishioners reported "support of each other" as a major attribute of Good Shepherd. This is a testament not only to the genuine care that exists between members, but also to the outstanding quality of our pastoral care ministries.

The River of Healing chapter of the International Order of St Luke is based at Good Shepherd and has a significant presence in the life of the church – enough so that *healing* is singled out in our mission statement. Healing was ranked fourth in the reasons why respondents continue to worship at Good Shepherd.

This growing ministry is visible in Tuesday night Soaking Prayer services, Thursday Healing Eucharist, and following all Sunday services at the altar rail, but members are also active through the week in private prayer sessions or home visitations by appointment. The River of Healing chapter is a co-sponsor of Healing Winds, an annual healing conference with nationally known speakers, which just completed its 15th year.

Stephen Ministry is also very active at Good Shepherd, continually upgrading its training to partner with parishioners as they move through times of transition or hardship.

Pastoral Care teams are activated by our pastoral care coordinator, to help with physical needs or other kinds of support within the parish as occasions arise. She also sends out prayer requests from the congregation to the prayer chain.

The Prayer Shawl ministry keeps a supply of hand-made shawls on hand that have been blessed at the altar, to give to anyone in need of encouragement or healing.





One of the things Good Shepherd does is to build well and maintain what we've been given. (Survey comment)

FACILITIES MINISTRIES:

Gardens & Grounds, Kitchen Upkeep

CHURCH FINANCE and LEADERSHIP MINISTRIES:

Finance Committee, Vestry

STEWARDSHIP MINISTRIES:

Green Team, Memorial Garden, Mountain of Faith Endowment Fund, Stewardship

Eight ministries are involved with stewardship, finances, and leadership. We strive to be good stewards in all our affairs and in our care for God's creation. While finances are tight, Good Shepherd has been able to maintain its tradition of paying off debts on time or ahead of schedule.

Part of Fr. John's legacy is a parish dream of making Good Shepherd a center of healing, not only in our prayer ministry, but also through our gardens. The vision is there, but is awaiting additional muscle and financing.



Hugs accompany Meals for Friends

OUTREACH MINISTRIES:

Blood Drive, Country Fare, DeSoto Square, Food Pantries, House-Raising Volunteers, Meals for Friends, Missions, Outreach Committee

We are deeply committed to outreach, returning approximately 18% of our resources to local and global charities. Country Fare is an annual outreach event which involves most of the congregation and raises as much as \$23,000 for distribution into the community. Budgeted outreach funds are divided between local and global relief efforts. Other outreach events include School Supplies Bags, Thanksgiving Baskets, Alternative Christmas, and Angel Tree, as well as multiple mission trips to Mississippi, India, Mexico, and Jamaica.

Good Shepherd was a founder of the Clay County Food Pantry in the 1990s, and continues to support it.

In the early 1980s, under the leadership of The Rev. Brad Rockwood, Clay and Cherokee Counties' Episcopal and Catholic churches pooled their resources to form Clay-Cherokee Christian Housing and applied for a HUD loan. Completed in 1985, DeSoto Square in Hayesville is a 32 unit apartment complex serving low-income elderly and handicapped adults. Its Board of Directors has members from all four churches.

We are eager for more people to join us in our outreach ministries.



In our Holy Conversation, the top response to what is "God's dream for Good Shepherd" was to grow Good Shepherd's membership, specifically through an increase in youth and families.

The second highest vision of God's Dream was to complete our Master Plan.

Third on the list was to be debt free in 3-5 years to free up money for ministry.



How We Work

The vestry has nine elected persons who, with the clergy, lead the parish. The vestry helps to discern the vision toward which God is drawing the parish. To that end, the vestry is responsible for good stewardship of money, property, personnel, and the spiritual gifts with which the Parish is blessed.

Vestry members serve a 3-year term and may not serve successive terms. Each vestry member serves as a liaison with one or more areas of parish ministries. Vestry meetings are currently led by the Senior Warden, nominated out of the vestry by the priest. This practice suited the style of Good Shepherd under previous rectors, but we are aware that under Church Canons the Rector is generally expected to conduct Vestry meetings.

Of those who completed the survey, 87% say that the Vestry is either effective or very effective in carrying out its responsibilities. A large majority also find it easy or very easy to indicate their interests and concerns to the Vestry, the Rector, and the staff. In addition, 87% believe that our parish is effective or very effective at keeping them informed about what is going on.

Parish Staff

- The Rev. Linda Baker Pineo, Interim Rector
- The Rev. Turner Guidry, Deacon
- Lynne Joynes, Church Administrator

Part-Time Staff

- Marilyn Pierce, Pastoral Care Coordinator
- Elizabeth Rybicki, Accountant
- Christian Education Coordinator (vacant)
- Keith Christensen, Choir Director
- Jerry Taylor, Organist
- Carol Smucker, Accompanist

Our Finances and Statistics

	2008	2009	2010	2011	2012 YTD (to 10/31)
Average Weekly Attendance	167	160	153	167	160
Sunday School Enrollment	15	19	8	10	8
Baptisms	4	1	3	4	7
Confirmed and Received	8	0	2	0	8
Marriages	2	3	3	0	0
Burials	5	4	11	4	9
Number of Pledges	119	125	121	123	123
Amount Pledged	\$261,432	\$261,467	\$246,777	\$252,183	\$259,095
Average Yearly Pledge	\$2,197	\$2,091	\$2,039	\$2,050	\$2,106
Total Operating Income	\$307,941	\$303,330	\$317,085	\$293,345	\$248,390
Total Operating Expenses	\$317,866	\$295,338	\$294,700	\$284,247	\$233,684



Rector Compensation

Interim Rector Compensation 2012

Salary	\$54,000
Housing (in kind)	\$ 18,400

Expected Rector Compensation

Salary + Housing	\$70-75,000
	Cash stipend for housing
Healthcare Options	High deductible/HSA
	Church pays deductible in excess of \$500
	Basic dental included
Vacation	4 weeks plus 5 Sundays
Continuing Ed	2 weeks, up to \$1000 reimbursed
Sabbatical	Yes, 2 weeks pay/yr into Sabbatical fund
Travel	Reimburse at IRS rate up to \$600/mo

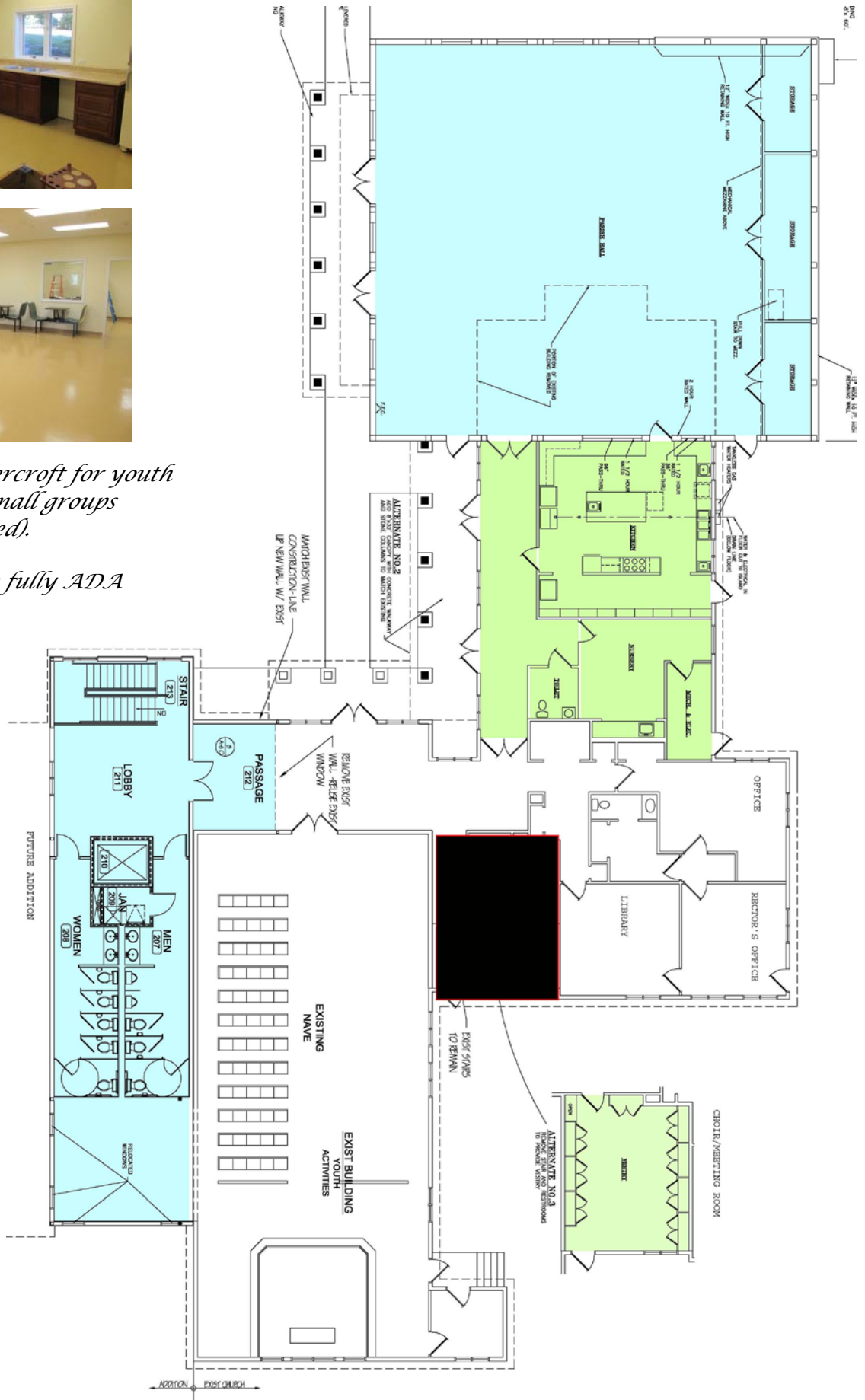
Our Facilities



Remodeled undercroft for youth activities and small groups (nearly completed).

All facilities are fully ADA compliant.

Future Nave
Goes Here



Our Diocese

The Diocese of Western North Carolina



© David Crosby 2001 used with permission

The General Convention in 1895 established Western North Carolina as the missionary district of Asheville. In one generation, the new missionary district became self-supporting and in 1922 became the Diocese of Western North Carolina. Our missionary origins continue to influence us as we tend to be a mission-driven, rather than issue-driven, diocese.

Comprised of over 15,000 members, the Diocese includes the 28 westernmost counties of North Carolina. The Diocese consists of sixty-three year round congregations, four summer chapels, two conference centers (Lake Logan Episcopal Center and Valle Crucis), Deerfield Retirement Community, and Christ School.



The diocese offers many opportunities for involvement from both clergy and lay people. Young and old alike enjoy Lake Logan and Valle Crucis with their pristine beauty and outdoor activities. Both can be used for Vestry, congregational or individual retreats. Camp Henry, our diocesan camp, is held each summer at Lake Logan and changes the lives of many of our youth. The Center for Christian Studies provides a resource for Christian Education throughout the diocese. In addition we are blessed with the presence of Kanuga Conference Center, serving many local, regional, national, and international bodies within the Anglican Communion.

In January 1995, former Bishop Robert H. Johnson consecrated All Souls Church located in Asheville at Biltmore Village as the Diocesan Cathedral. Our present bishop, the Rt. Rev. G. Porter Taylor, was consecrated and became bishop in 2004.

Our Communities

Good Shepherd primarily serves two counties with a total population of approximately 22,000 residents. The three major towns in those counties all have populations under 1,000 individuals. The majority of the parish lives within ten miles and is drawn from two states.

Nestled in the majestic Appalachian Mountains and along the shores of Lake Chatuge, Clay County, North Carolina, and Towns County, Georgia, comprise a place like no other. For those who love stream or lake fishing, hunting, boating, bike and horseback riding, swimming, hiking or field sports – our valley has it all. Three golf courses are open to the public, and the famous Appalachian Trail tops the surrounding peaks.

Clay County, North Carolina

Clay County is the smallest county in North Carolina covering 220 square miles including 6 square miles of lake. 80% of the county is forestland. The 2010 Census showed our population at 10,853 people. It borders Towns County, Georgia and Cherokee and Macon counties in North Carolina.

Originally, the area now known as Clay County was home to the Cherokee Indians who established a thriving community called Quanassee Town. Today Clay County is a mix of local residents and those lucky others who found their way here. Two hours from Atlanta, Asheville, and Chattanooga, this county has a small town ambiance complete with a tractor parade, a weekly farmers market, no traffic jams, over 50 churches, and local restaurants and stores.

Clay County has an award winning gourmet restaurant, two live theatre groups, a fabulous winery playing classical music to their grapes, world championship ‘punkin chunkin’, three labyrinths, and ongoing concerts on the historic downtown square. Good Shepherd members are usually found leading or supporting wherever food, crafts, or the arts are involved!

In addition to wonderful local artisans, several internationally famous artists maintain studios here. The Old Jail museum, Hayesville’s newly revamped local art, history and Native American heritage museum, is getting rave reviews from visitors and even the prestigious Smithsonian Institute. The Peacock Playhouse is a recently-refurbished performing arts center.

The nearby community of Brasstown is home to the world famous John C. Campbell Folk School, dedicated to teaching the Appalachian folk arts from blacksmithing to fiber arts to mandolin making to painting and woodworking classes. Its catalog features several





hundred year-round classes. Its annual Fall Festival attracts thousands of visitors.

Clay County is surrounded by the breathtaking Appalachian Mountains, beautiful in all seasons. Tourists flock here in the fall to see the changing leaves. Picturesque Lake Chatuge, an original TVA project connecting Clay County and Towns County, Georgia, provides lots of fun and water recreation opportunities.

The Clay County School system consistently ranks in the top percentage of the entire state on test scores and has been ranked either a School of Distinction or a School of Excellence since the statewide accountability program began. This year their students scored 6th in the entire state in the ACT tests, which for the first time was required of all 11th grade students. Their high school students have the highest SAT scores of any schools in the area. The school district offers a full athletic program and maintains strong community ties.

Tri-County Community College just inside neighboring Cherokee County offers a two-year associate degree and participates in the Career and College Promise Program (CCPP) in which qualifying high school students may earn college credits tuition free.

In addition to all the activities and great school system, Clay County residents have big hearts. Many resources exist to help individuals and families in need. Many of these resources require volunteers. Clay County residents consistently deliver. Good Shepherd helped start the active Food Pantry, and the Meals for Friends program feeds many seniors in our area. REACH exists to help abused women and their families.

Social Services and the Health Department offer invaluable assistance and hope. Senior activities are sponsored by the Senior Center and senior or rehabilitative care is provided by the Clay County Care Center and the Hayesville House. Medical services are available from local doctors and home nursing organizations. Hospitals are located in all of our adjacent counties. Clay County has state of the art emergency services.

Towns County, Georgia

Directly across the lake from Clay County lies Towns County, Georgia, created in 1856. Towns County, of which 5 square miles is water, is slightly smaller than Clay County. County population was 10,471 in 2010. Hiwassee (a Cherokee word meaning "meadow") is the county seat.





Brasstown Bald is the highest point in Georgia at 4,783 feet.

The Hiawassee area has restaurants of all kinds, shops, a hospital, and a 6-cinema theater and entertainment center.

Just west of Hiawassee are the Georgia Mountain Fairgrounds. There one can enjoy beautiful year-round camping facilities, ball fields, and several popular annual events including the Georgia Mountain Fair, the Superstar Concert Series, the Georgia Mountain Fall Festival and Georgia's Official State Fiddler's Convention.

The second town in Towns County is Young Harris, originally named Young Harris College in honor of Judge Young Loftin Gerding Harris of Athens. It soon shortened to Young Harris, although Young Harris College is an ever-expanding presence in the village.

Founded more than 125 years ago and historically affiliated with The United Methodist Church, Young Harris College is a 4-year progressive model of liberal arts education featuring innovative bachelor's level academic programs, state-of-the-art facilities, a planetarium and observatory, and competitive NCAA Division II athletics. With more than 1,000 students on its campus, Young Harris College provides a learning environment conducive to students and faculty working closely together.

Young Harris College also hosts the Institute for Continuing Learning (ICL) where local adults may benefit from inexpensive, short-term classes in topics from history to healthy eating, or politics to pastels.

More information, links, and great pictures for both counties can be found at:

www.ncmtnchamber.com

www.hayesville.org

www.mountaintopga.com

www.yhc.edu

www.tricountycc.edu

www.folkschool.org



Also in Young Harris is the Brasstown Valley Resort & Spa, boasting a golf course, stables, spa, and up-scale or casual lodging and dining.

We are surrounded by God's amazing creation, and the serenity and peace brought by this environment are priceless to us.



Lake Chatuge Area

Tourism and retirees have become an important economic factor in the Lake Chatuge watershed. Between 1990 and 2010, the population of our two counties grew by 62%. The area also experiences significant seasonal population fluctuations due to an influx of summer residents and recreational travelers. The year-round population of Towns and Clay counties is older than the population of the United States as a whole. For more area statistics and maps, see www.hrwc.net/wap/section2.pdf



How to Apply

Please send the following to
The Rev. Canon Jim Pritchett

1. A letter of interest addressed to the Discernment Committee
2. Your resume
3. Your OTM portfolio

Please send by email only to
jimpritchett1@me.com

2013 Vestry

- Dave Smucker, Senior Warden
Church Finance and Leadership
- Joe Rybicki, Junior Warden
Facilities
- Anne Wolf
Outreach Team
- Deanna DuBose
Worship Team
- Chuck Van Gorder
Pastoral Care and
Healing Ministries
- Georgia Bethel
Christian Education and
Youth Team
- Jane Oliver
Church Growth Team
- Kurt Hoffman
Parish Life Team
- Elmer Wilson
Stewardship Team

Discernment Committee

Dave Larson, Chairman

Human Resource executive for Honeywell International. Retired. Member of Good Shepherd for 14 years. Served with many ministries including several terms as Senior Warden and Order of St Luke.

Carolyn Griffiths, Chaplain/Holy Conversation

Servant of Christ, cradle Episcopalian. Teacher. Retired. Member of Good Shepherd 7 years. Serves with Order of St. Luke, coordinator/interpreter of deaf ministry. Previous church: vestry.

Jane Oliver, Vestry Representative

Raised three children; owned small retail business; business consultant; medical librarian. Retired. Member of Good Shepherd 5 years. Current Vestry member. Previous church: Vestry, Outreach Chair, Administration, Parish Life, Finance

Rachel Baughn, Parish Profile

Editor of monthly radio hobby magazine. Retired. Member of Good Shepherd 13 years. Served with many ministries, including Order of St Luke, Vestry/Sr. Warden, Adult Spiritual Formation, Sabbatical Planning.

Teresa Gribble, Recording Secretary

Worked for a number of non-profits. Retired. Member of Good Shepherd 4 years. Diocesan positions: Commission on Ministry, Trainer for Parish Lay Discernment Committees. Previous church: Treasurer, Vestry, Senior Warden, Search Committee.

Jim Harrison, Parish Survey

Real estate broker and VP to large independent realtor. Semi-retired. Member of Good Shepherd 9 years. Serves as Usher, Stephen Minister. Previous church: Long Range Planning Chairman, Treasurer, Vestry/Sr Warden

Barb Lanwermeyer, Holy Conversation

Homemaker, clinical social worker. Retired. Cradle Episcopalian, member of Good Shepherd 8 years. Service focus on youth and outreach

Karen Sirmans, Communication

English teacher at community college; wrote for various publications. Retired. Member of Good Shepherd 3 years. Serves in several ministries.

Doug Stuart, Parish Survey

Texaco Chemical sales and marketing executive. Retired. Member of Good Shepherd Church 8 years. Serves in many ministries including Welcoming/Newcomers, Order of St. Luke, Choir, and Finance. Has served as Senior Warden.

Tom Wilkerson, Interviews

College president. Retired. Member of Good Shepherd 2 years. Previous churches: Finance Chair, Vestry Member, Senior Warden.

Becky Van Gorder, Ex-officio Chaplain

Teacher. Retired. Good Shepherd founding family member.

The Rev. Timothy McRee, Consultant

Rector, St. Andrew's Episcopal Church, Canton NC